

**BARRIERS TO MALARIA CONTROL IN  
PREGNANCY IN SOLOMON ISLANDS :  
A CASE STUDY**

**Makiva Tuni**

**Bridging the Research Policy Divide Course**

**National Centre For Epidemiology And Population Health (NCEPH)**

**Australian National University**

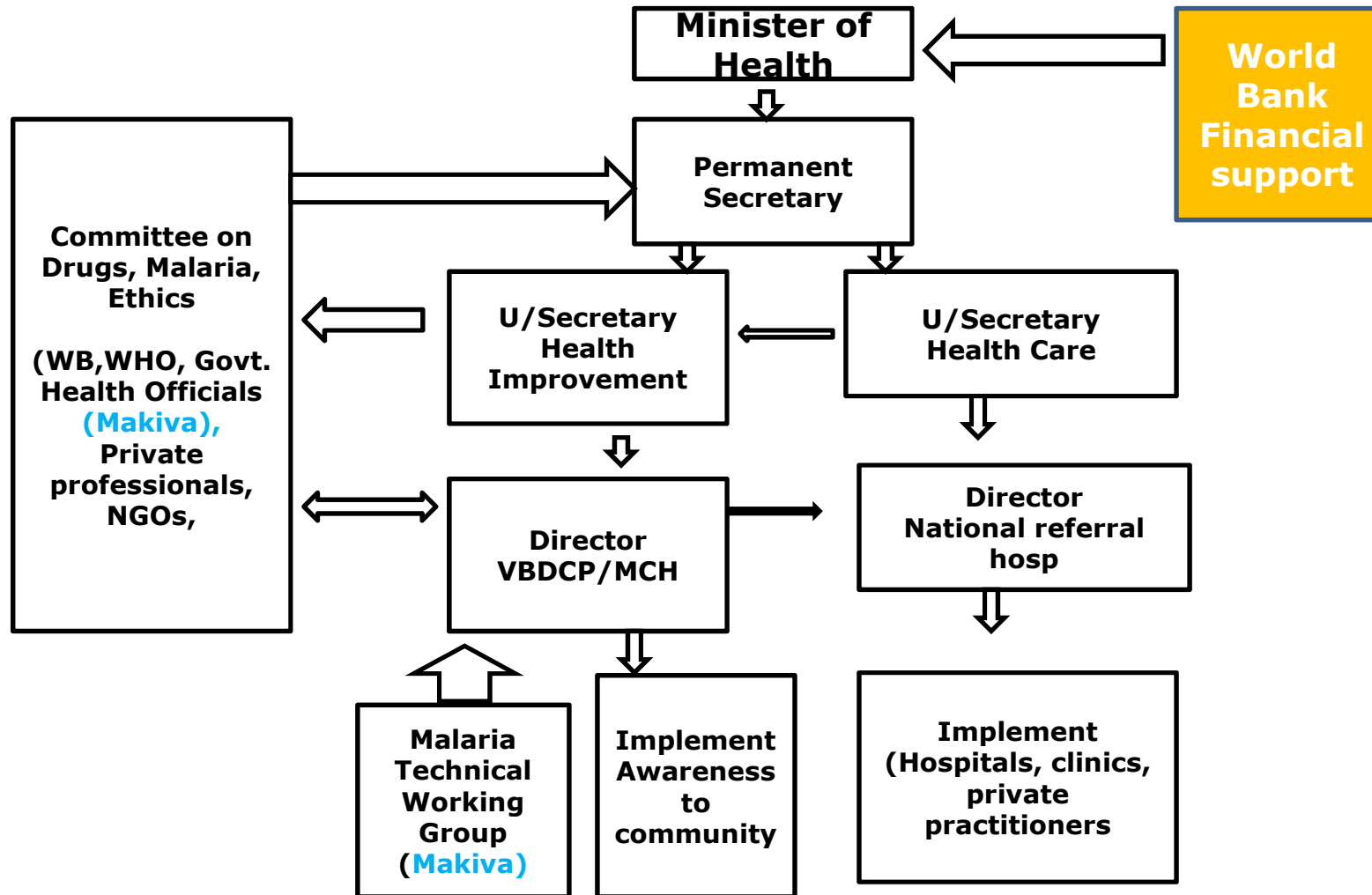
# 1.FOR WHAT AND WHOM



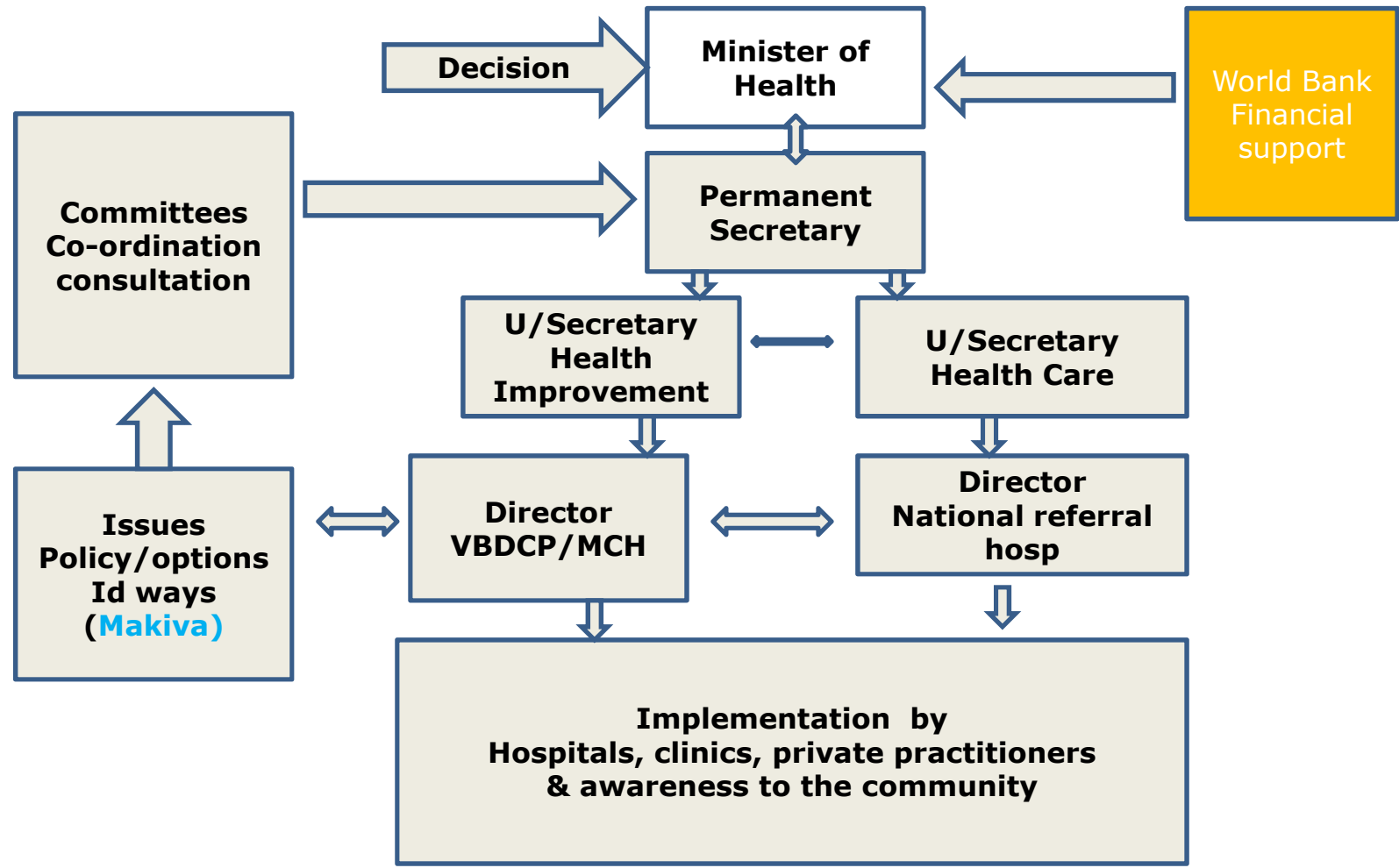
1. Epidemiology of Malaria
2. Effectiveness of current policy case management
  - Free bed nets
  - Ante-natal clinic

## 2. OF WHAT :

### (a) Systems view



## 2. OF WHAT : (a) Stages model



## **2. OF WHAT :**

### **(b) Scoping**

- **Possible Options :**
- **National study covering the whole country**
  - **Rural and urban**
  - **Takes lots of time and lots of money**
- **Applied what is working in other countries**
  - **Different levels of endemicity/vectors & geography**

## **2.OF WHAT :**

### **(b) Scoping**

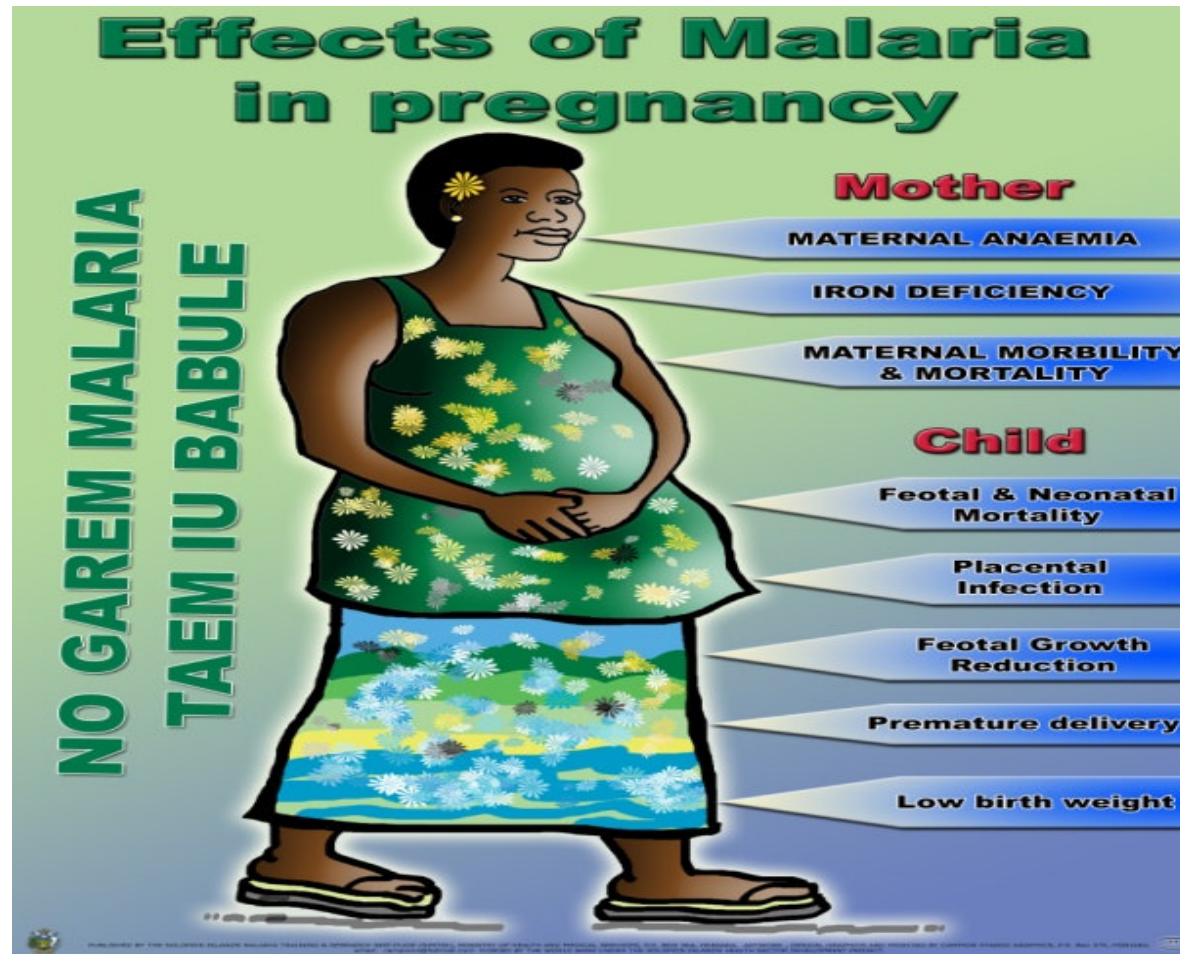
- **PLAYERS:**
- **Committees**
  - **Health research and ethics committee**
  - **Drugs & therapeutic committee**
  - **Malaria technical working group**
- **Expertise : UQ**
- **World bank ,WHO -funding**

## **2. OF WHAT:**

### **(c )Boundary setting**

- **3 months field work**
- **Focus in rural area**
- **Health facility accessible by boats**
- **Limited hospitals & clinics**
- **Local research assistants**
- **Nurses for placental blood samples**

**2. OF WHAT:  
(d) Problem framing**





## **2. OF WHAT:**

### **(e) Taking values into account**

- **People focus approach, a strategic goal for ministry of health**
- **Social justice: Advocate for special risk group**
- **Consistent in developing IEC materials**
- **Team work /Co-ordination between stakeholders**
- **Respecting cultural values/professionalism**

## **2. OF WHAT :**

**(f) differences to harness**

- **Recognition and respect of positions within the system and outside**
- **support network**
- **Researchers and recognition to influence policy change**
- **Access to information**

## **2. OF WHAT :**

### **(f) Differences to manage**

- **Monetary rewards and funders**
- **Team work amongst researchers from different cultures**
- **Time deadlines**

### **3. HOW BY WHOM AND WHEN?**

#### **(a) How we provided the information**

**Formal report to community, director VBDCP/MCH, world bank  
and university of Queensland**

**-Power point presentations to hospital & clinic in the study area**

**-Seminar type presentation to PS,US and executive of the MOH**

**-Informal presentation with the women in the villages**

**-University power point presentation and formal report**

**- Journal publication**

### **3.HOW BY WHOM AND WHEN? :** **(B) how I acted as advocate.**

- **Meetings with director VBDCP/MCH,WHO to discuss the purpose of the study**
- **Submit proposals to ethics committee MOH,UQ**
- **Inform hospitals ,clinics ,communities and participants**
- **Provide answers to Individual participants Queries**

### **3.HOW BY WHOM AND WHEN? :**

**(c) How I engaged with the policy makers**

- **Engineering and engagement Helps to understand Engagement**
- **Engineering: From identification of topic to Results/output by VBDCP**
- **Engagement: Worldbank as funder and study activities supervised by another institution**  
**building relations and approval is important**

### **3. HOW BY WHOM AND WHEN? :** **(d) My responsibility & When**

**Two researchers responsible + supervisor**

- **Planning**
- **Implementation of activities**
- **Analysis**
- **Reporting**
- **Media played limited role.**

**Throughout the study**

## **4. CONTEXT:**

### **(a) Overall contextual factors**

- **Changing program direction (Policy/Guidelines)**
  - **Malaria eradication : Chloroquine (CQ)**
  - **Malaria control (1992): CQ + ANC + bed net**
  - **Malaria elimination: IPT + ANC+ LLIN**
  - **Incremental changes**
- **Increasing pattern of CQ resistance**
- **Interest stakeholders :**
  - **Maternal child health,WHO: Maternal mortality, safe motherhood programmes**
- **Research evidence (How big is the prob) provides**
- **Basis for further funding- Global fund**



## **4. CONTEXT**

### **(b) legitimacy**

- **MOH have confidence in the institution (SIMTRI)**
  - **Researcher/team**
  - **Formal health research ethics approval**
  - **Funder: World bank**
  - **Equipment support & facility**
  - **Expert advice Drug therapeutics committee**
  - **Collaborative research network: Malaria in pregnancy**

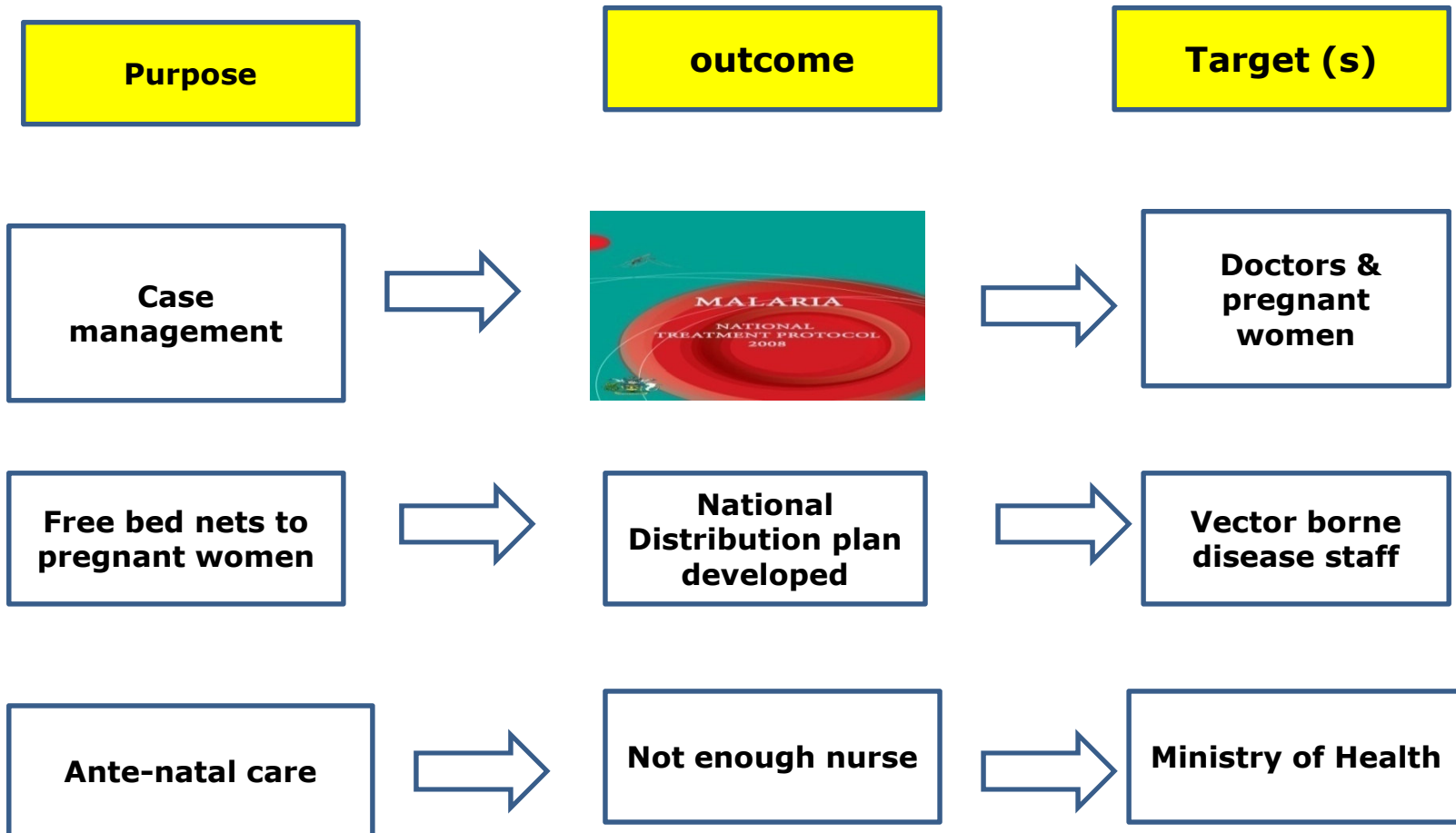
## **4. CONTEXT**

### **(c) organizational barriers & facilitators**

- **Enabling: use of Health facility & equipment /free access**
- **Barriers: Adopted recommendations of research but slow implementation**
- **Recommendations were taken onboard but different programs have different priorities.**

## 5. OUTCOMES

### (a) Relationship with aims and target



## **5. OUTCOMES**

### **(b) comments on outcomes**

- **18% prevalence of malaria amongst pregnant women an issue compared with 24 % in previous studies.**
- **Some recommendations were acted on but some were not implemented**
- **Should have included the Institutions to develop the curriculums at the Solomon Islands school of nursing and Public health**
- **Our actions were successful in terms of the VBDCP context but we should have extend our target to involve the young graduating students that will later use the protocols.**
- **The systems view did not take into account the implementation and funding for various activities.**

## 5. OUTCOMES

### (c ) control

Can control	Cannot control
Research itself	Policy making process
	Decision to increase nurses at ANC
	Procurements and funding for bed nets
	Training of trainers for new protocol
	Funding for bed nets

LURIM U BHAEN